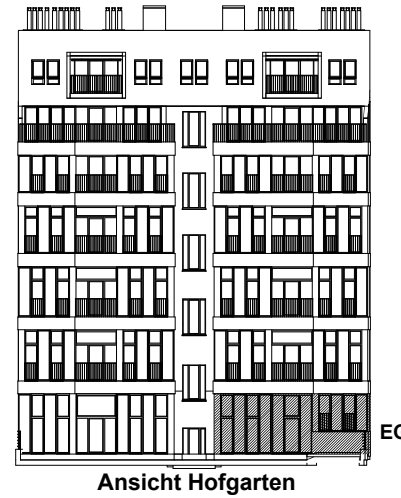
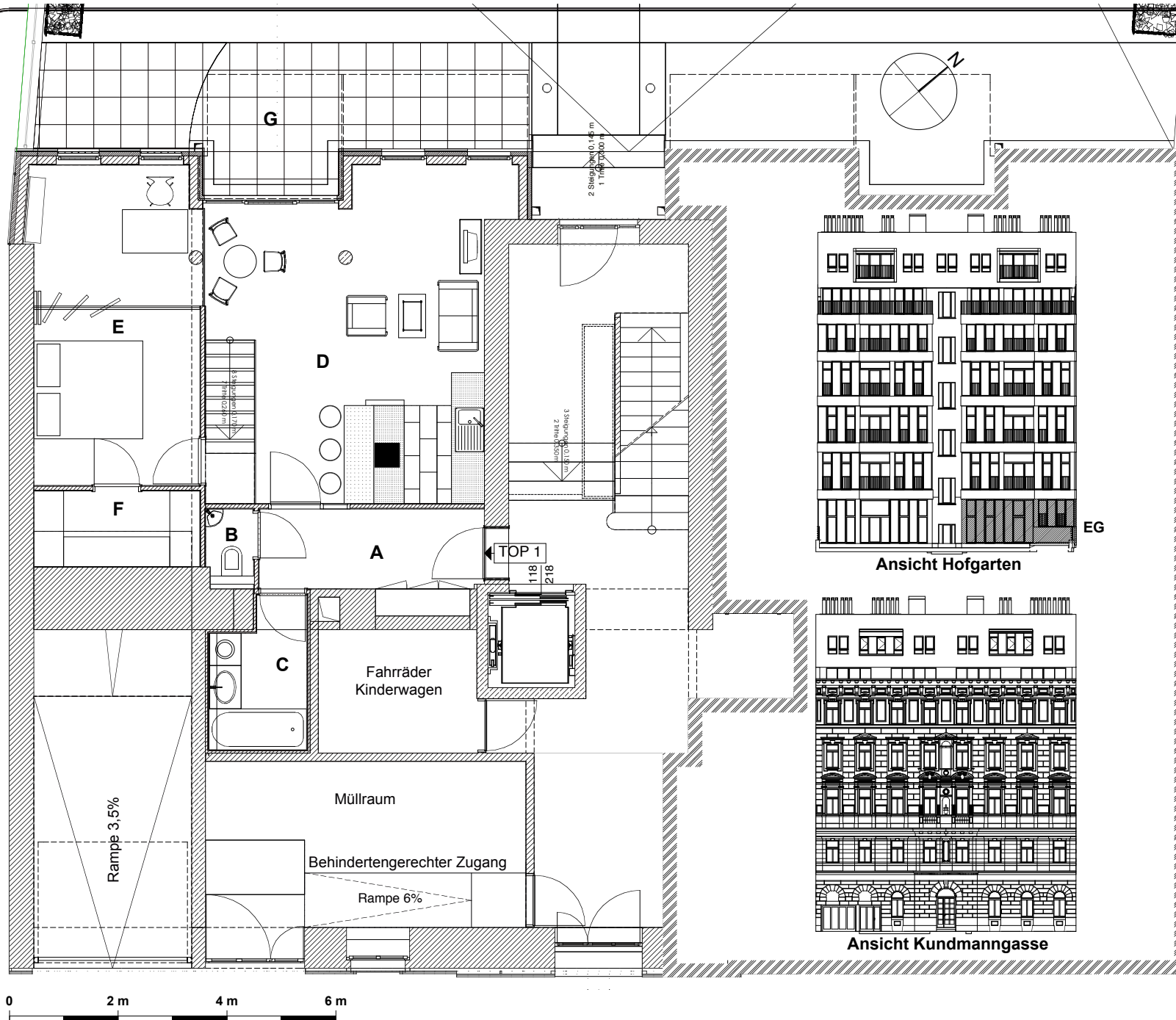


## Garden Loft

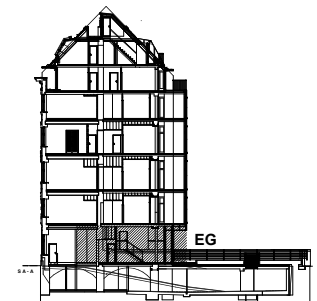
### TOP 1 / EG

A	Vorzimmer	6,88 m <sup>2</sup>
B	WC	1,09 m <sup>2</sup>
C	Bad	4,88 m <sup>2</sup>
D	Wohnküche	29,24 m <sup>2</sup>
E	Zimmer	17,76 m <sup>2</sup>
F	Garderobe	4,45 m <sup>2</sup>
<b>Wohnfläche</b>		<b>64,30 m<sup>2</sup></b>
G	Terrasse	19,77 m <sup>2</sup>
H	Garten	52,00 m <sup>2</sup>



### LUTZ WEBER IMMOBILIEN

A-1010 Wien  
 Seilerstätte 10 / 23  
 tel. ( 01 ) 6410656  
 mail : office@lutzweber.at



Schnitt A - A