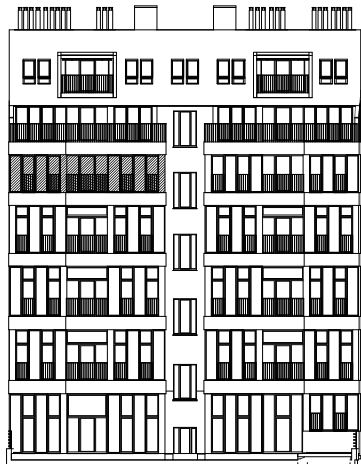


# Allround F

## TOP 12 / 3. Stock

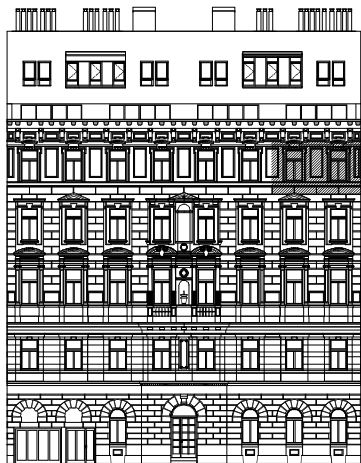
A	Vorzimmer	11,05 m2
B	WC	1,18 m2
C	Bad	5,23 m2
D	AR	1,53 m2
E	Wohnküche	54,64 m2
F	Zimmer	17,20 m2
<b>Wohnfläche</b>		<b>90,83 m2</b>
G	Loggia	7,70 m2

3. Stock

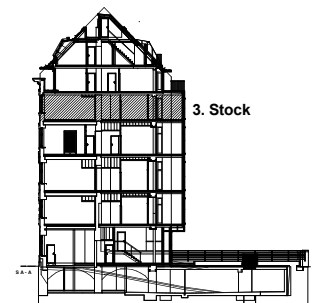
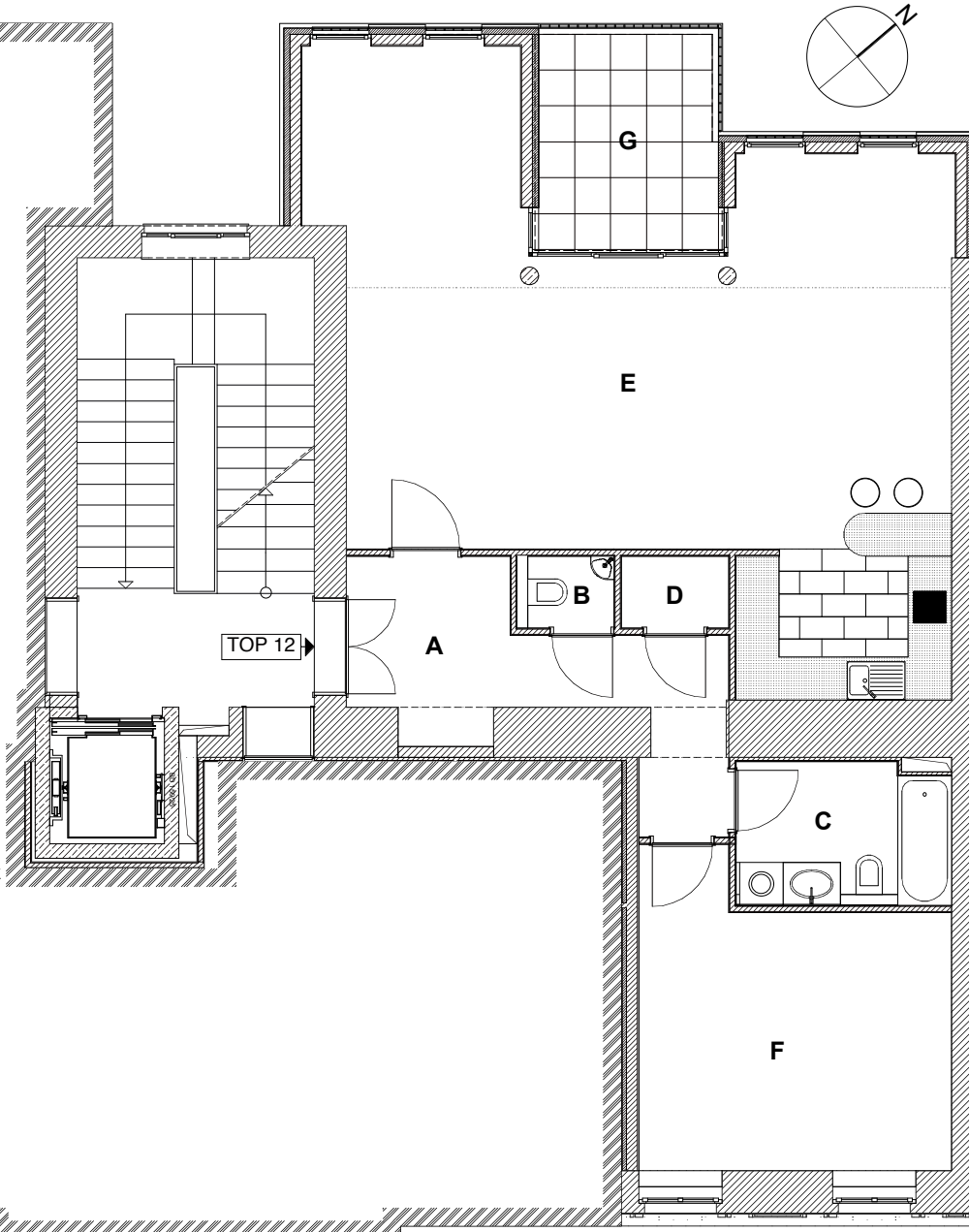


Ansicht Hofgarten

3. Stock



Ansicht Kundmannngasse



Schnitt A - A

### LUTZ WEBER IMMOBILIEN

A-1010 Wien  
 Seilerstätte 10 / 23  
 tel. ( 01 ) 6410656  
 mail : office@lutzweber.at